



Australia & New Zealand

Mitsubishi Triton 2011: PPMITS08.0



1. Disconnect negative terminal from negative terminal.



2. Locate ECU behind L/H Front kick panel.



3. Remove L/H front door strip.





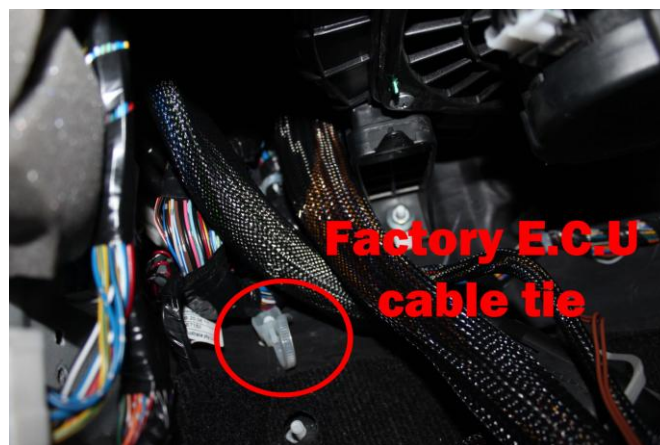
4. Remove L/H front kick panel.



5. Remove Glove box, by lowering and unclipping. Remove black plastic glove box cover 5 screws and 2 body clips.

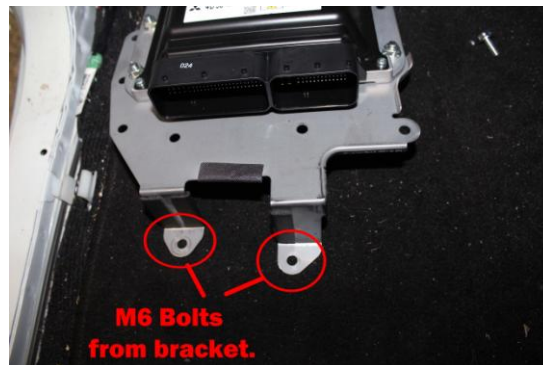


6. Remove factory E.C.U cable tie at base of E.C.U. mount.

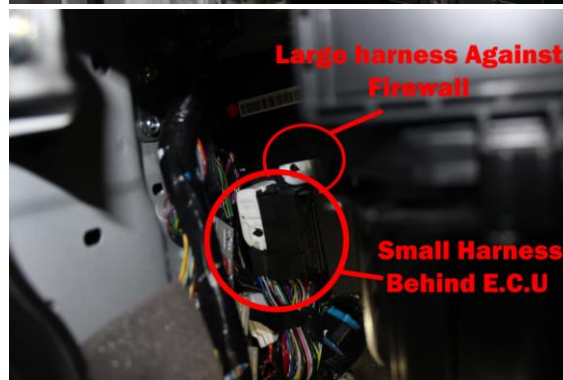




7. Remove the two M6 bolts at the bottom of E.C.U bracket and remove ECU.

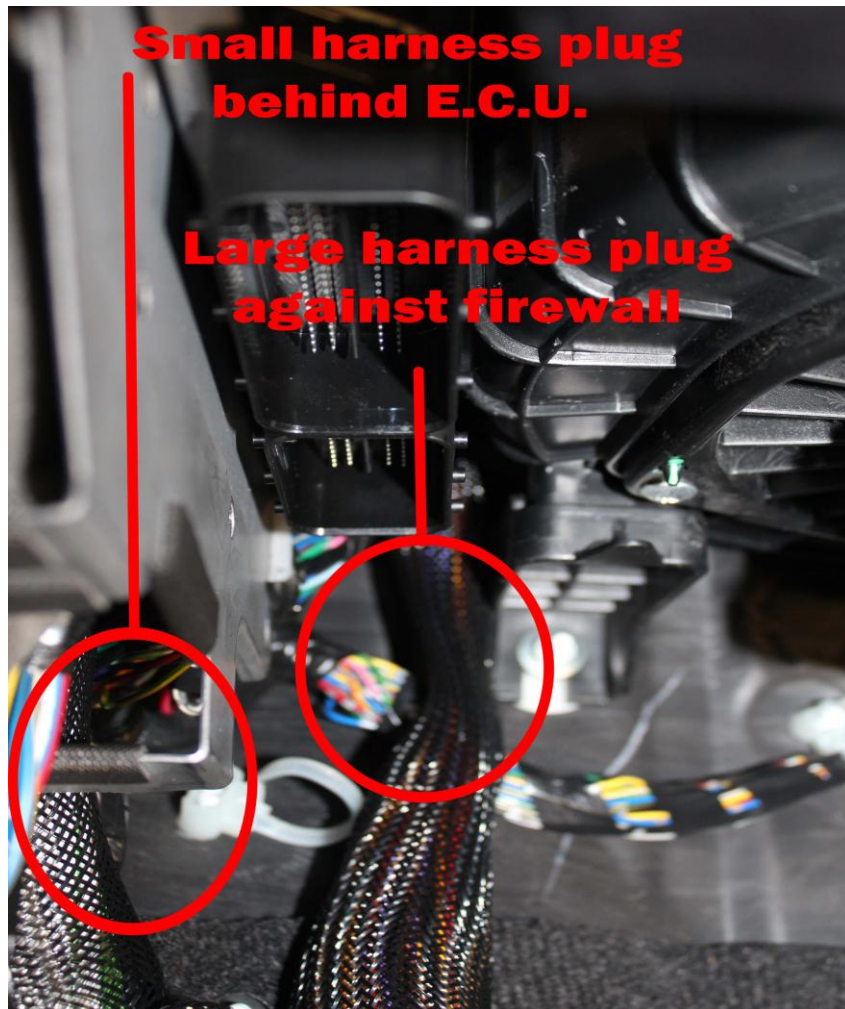


8. Fit plug and play harness up above E.C.U location towards firewall, small harness behind E.C.U.



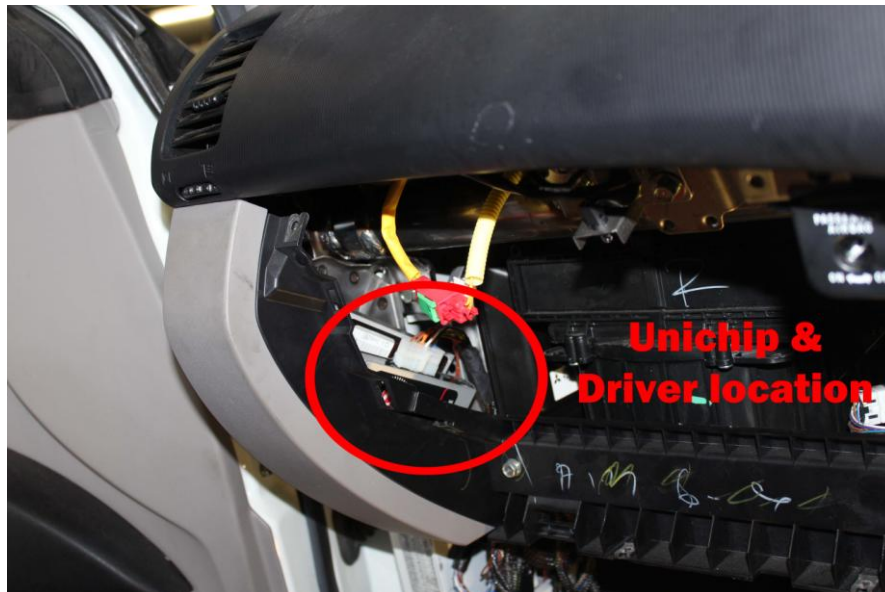


9. Run Plug and Play harness behind ECU bracket & Re-mount factory E.C.U.





10. Fit Unichip and driver on the L/Hand side of the Glove box in front of the factory E.C.U.



11. Remove carpet insulation glued to kick panel & Refit Kick panel and door strip.

